



TIEMME

RACCORDERIA GENERICA GENERIC FITTINGS

Serie 1550

Raccordo dritto femmina/femmina Straight female connector

La raccorderia generica Tiemme si adatta ad ogni tipo di impianto idraulico domestico e commerciale, applicazioni industriali ed agricole, impianti di riscaldamento, igienico sanitari e generalmente con ogni fluido non corrosivo.

The brass generic fittings are suitable for domestic and commercial plumbing, industrial, agricultural application and generally with every non aggressive fluid.

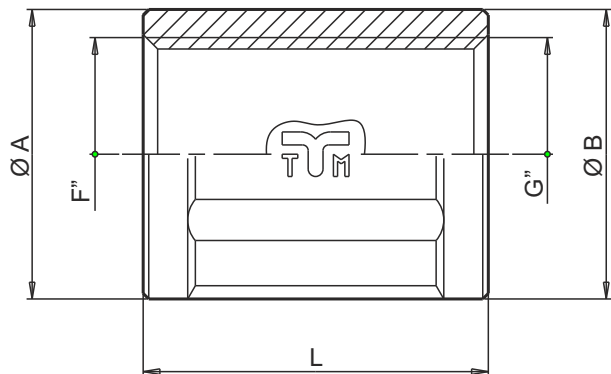


Tabella dimensioni
Sizes table

F	G	CODICE / CODE	L	ØA	ØB
1/4"	1/4"	1550G000202	22,0	16,8	16,8
3/8"	3/8"	1550G000303	23,0	22	22
1/2"	3/8"	1550G000403	24,5	27	21,5
1/2"	1/2"	1550G000404	31,0	26	26
3/4"	1/2"	1550G000504	25,0	35	27
3/4"	3/4"	1550G000505	33,0	32	32
1"	1/2"	1550G000604	30,0	42	27
1"	3/4"	1550G000605	30,5	42	32
1"	1"	1550G000606	39,0	40	40
1 1/4"	1"	1550G000706	43,5	51	42
1 1/4"	1 1/4"	1550G000707	45,0	50	50
1 1/2"	1 1/2"	1550G000808	50,0	57	57
2"	2"	1550G000909	58,0	72	72
2 1/2"	2 1/2"	1550G001010	65,0	89	89
3"	3"	1550G001111	70,0	103	103
4"	4"	1550G001212	80,0	130	130

Caratteristiche Tecniche

Temperatura max di esercizio: 200°C
 Temperatura min di esercizio: -20°C
 Pressione max di esercizio: 30 bar
 Filettature: femmina UNI ISO 228

Technical Features

Maximum temperature: 200°C
 Minimum temperature: -20°C
 Maximum operating pressure: 30 bar
 Threads: female UNI ISO 228

Descrizione

Corpo

Materiale

Ottone CW617N - EN12165

Description

Body

Material

CW617N - EN12165 brass

